

Ad-Axis Management Console

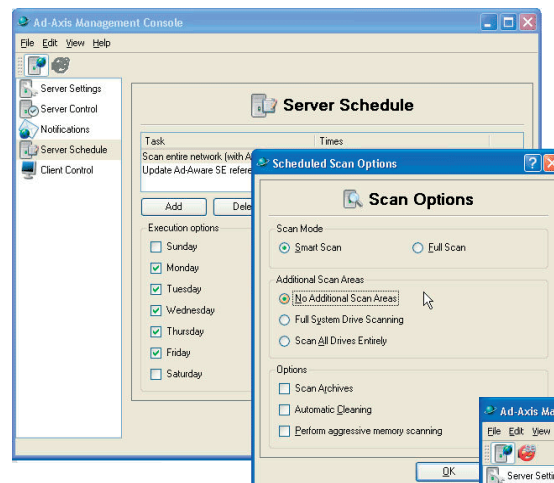
Central Management of Ad-Aware

Lavasoft currently distributes its industry leading antispyware application Ad-Aware to over 130 million home and corporate users worldwide including 3000 partners in over 120 countries. Lavasoft provides its customers with three antispyware software solutions, Ad-Aware SE Personal, Plus and Professional editions. Ad-Axis Management Console is a natural extension to the Ad-Aware family; a tool for corporate customers to centrally control large distributions of Ad-Aware.

Ad-Axis works as centralized management of Ad-Aware execution. This includes scheduled execution on corporate network clients. It automatically reports of server status and Malware detection to Internet Mail (SMTP). Ad-Aware reference files are centrally updated, which keeps Internet traffic low and in addition makes definition file updating of your clients simple and secure. The server and client run as Windows® services and therefore user interaction is neither necessary nor possible. Ad-Axis also allows you to monitor the definition file version on the computers in the corporate network and the Malware detection logs from previous Ad-Aware executions. The Management Console provides you with easy deployment and updating of clients through .msi files and low bandwidth consumption for client-server connections.

Ad-Axis Key Functions

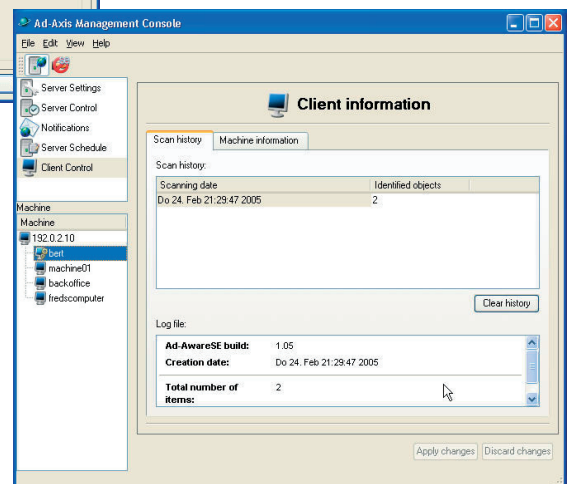
Ad-Axis Server Scheduling panel & Scan Options dialog



Scheduling is one of the most important features of Ad-Axis. It allows to execute specific tasks periodically and thus automates the usage of Ad-Aware within a local network. Through the Scan Options dialog box you can choose the type of scan you want and the scan areas. The options section provides access to the more fine-grained options of Ad-Aware SE.

Ad-Axis monitoring panel

In the first Ad-Axis Management Console Monitoring panel (Scan History) you are able to view specific logfiles by selecting one of the items from the 'Scan History'-list. Another important feature of this panel allows you to manually scan any of the present clients.



Requirements for the client include any client hardware that can run Windows® and Ad-Aware. The server requires 200 MB of free disk space, an Internet connection, and mail server (SMTP) access. Ad-Axis runs on Windows® NT 4.0, 2000, 2003 and XP versions of Windows®.